

AVAILABLE
FROM STOCK

BULLETIN 3.0505.0



THE STANDARD OF SILENCE

HIGH PERFORMANCE STC 49 NOISE-LOCK[®] DOORS

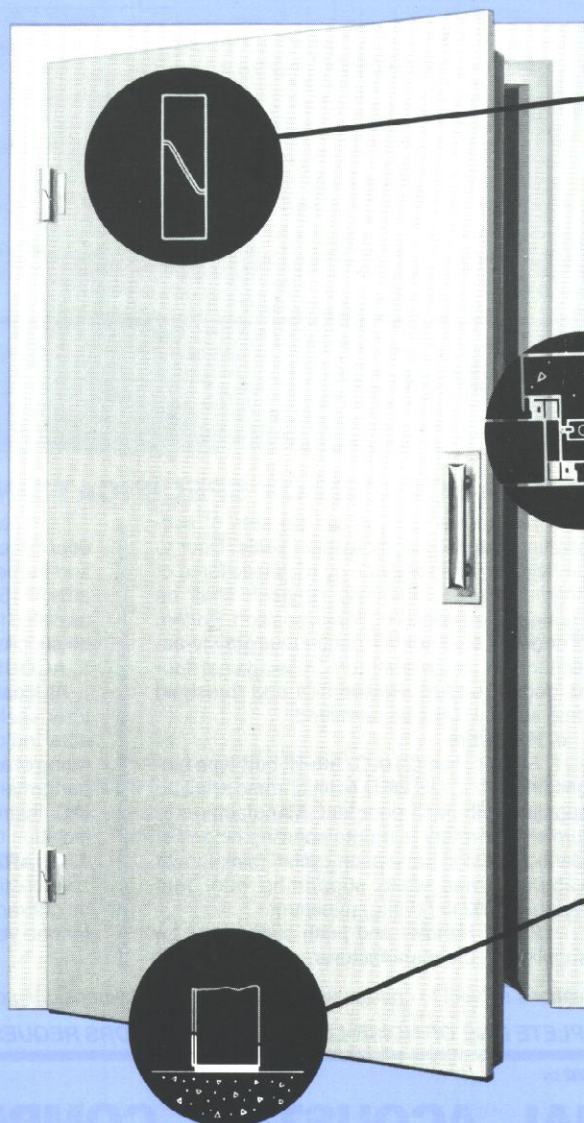
(magnetic and cam-sealed)

• IMMEDIATE SHIPMENT • STOCK SIZE 3070 • LEFT HAND AND RIGHT HAND SWING • VIEW WINDOW OPTIONAL • UNIVERSAL LOCK PREPARATION PER ANSI STANDARDS A115.1 & A115.2

Typical applications:

Broadcast Studios
Announcer Booths
Dubbing Rooms
Editing Rooms
Recording Studios
Sound Stage
Control Rooms
Production Studios
Rehearsal Halls
Concert Halls
Back Stage
Scene Shop
Sound Locks
Music Practice Rooms
Language Laboratories
Conference Rooms
Hotel Suites
Private Offices
Teleconferencing Rooms
Convention Centers
Police Interrogation Rooms
Audiometric Testing Suites
Psychological Therapy Rooms
Interview Rooms
Speech Therapy Rooms
Counselling Rooms
Computer Rooms
Firing Ranges
In-Plant Offices
Portable Shelters
Manufacturing Area Offices
Engine Test Cells
Acoustic Shielded Rooms
Secure Telephone Booths
SCIF Facilities
Machine Enclosures

Engineered Combination of Acoustical, Mechanical, and Structural Features Assures High Field Noise Reduction, Proven in Thousands of Installations Since 1962.



GRAVITY

Positive acoustic seal achieved every time door is closed. Gravity action of cam-hinge holds door firmly against jamb and head seals and causes weight of door to compress bottom seal tightly against floor.

MAGNETISM

Self-adjusting double magnetic and sound absorbing jamb and head gaskets form acoustic labyrinth sound seal. Magnetic feature holds door in closed position eliminating need for noisy conventional latches. Door can be opened easily by a pull handle on outside or by pushing from inside for normal or panic type operation. Door assembly reinforced per ANSI Standards A115.1 and A115.2 to receive field installed recessed or surface-mounted security locks.

COMPRESSION

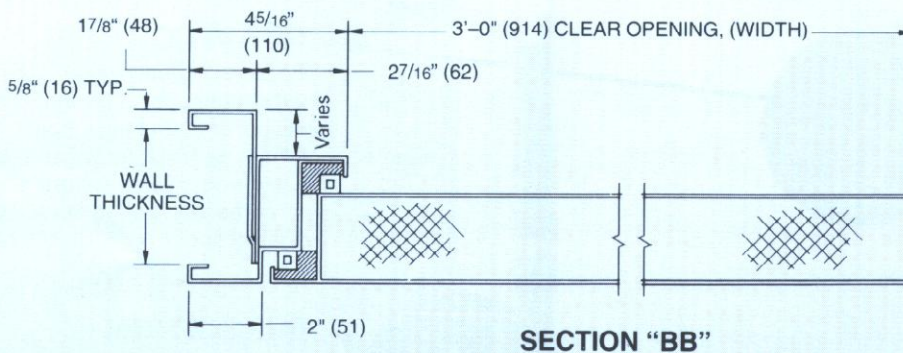
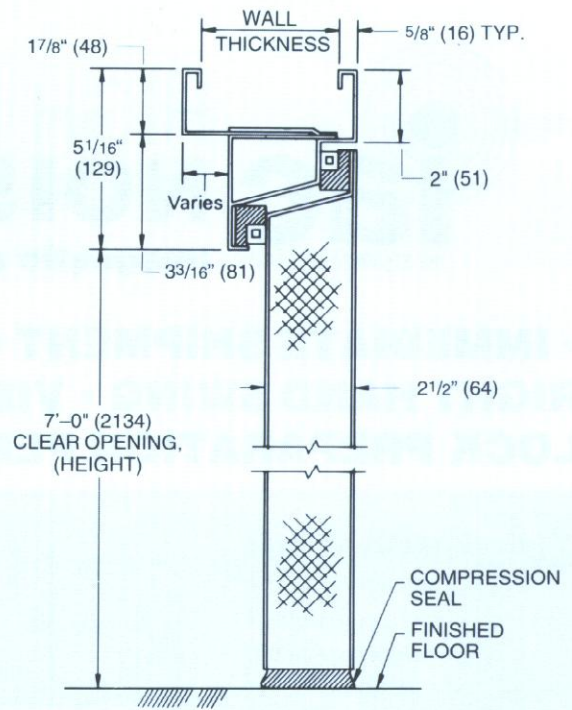
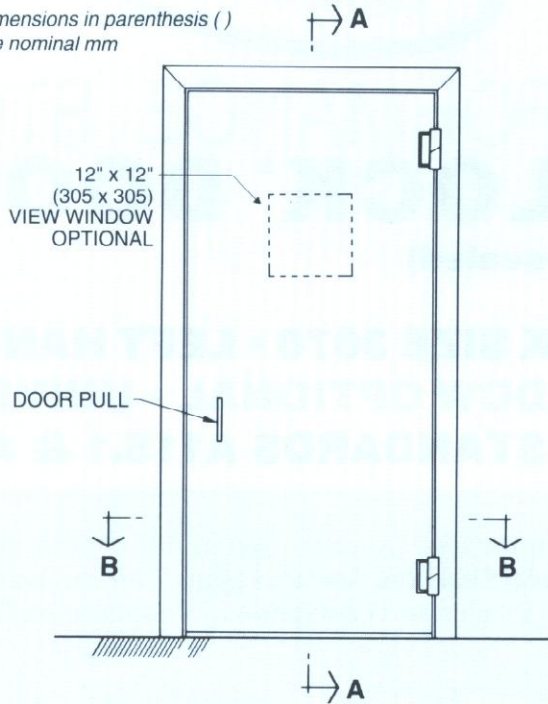
Fixed bottom seal of door leaf compresses firmly against floor. The rugged foolproof IAC Noise-Lock door does not require hazardous raised thresholds and complicated drop seals. Reliable acoustic performance is thus assured each and every time door is closed.

INDUSTRIAL ACOUSTICS COMPANY

TYPICAL DETAILS

IAC STOCK NOISE-LOCK® DOOR WITH SPLIT FRAME — FACTORY ASSEMBLED

NOTE: Dimensions in parenthesis () are nominal mm



SECTION "AA"

SECTION "BB"

INSIDE SPLIT FRAME

NOTE: Field cut split frame to accommodate wall thicknesses from 4 in. to 12 in. (102 to 279)

OUTSIDE FRAME
CAM-SEAL HINGES

IAC STOCK NOISE-LOCK® DOOR SPECIFICATIONS

1. SOURCE

Door and frame assemblies complete with acoustic seals and cam-lift hinges shall be IAC Noise-Lock® as manufactured by Industrial Acoustics Company, Inc., 1160 Commerce Avenue, Bronx, New York 10462.

2. MATERIALS

a. Door leaf shall be 2 1/2 in. thick (64mm) fabricated from 16 ga (1.5mm) steel and filled with sound absorbing and damping elements.

b. Frame shall be fabricated from 16 ga (1.5mm) steel and furnished in two inside and outside mitered and welded pieces as shown on drawings.

c. Assembly and adjustment of single leaf door, frame, acoustic seals, and hinges shall take place at factory and entire unit shipped to job ready to install and operate.

d. Acoustic Seals — Side and head of door

and frame shall receive two (2) sets of self-aligning magnetic-compression seals. Door to be held in closed position by magnetic force of perimeter seals. Acoustic labyrinth shall be created when door is in closed position. Bottom of door leaf shall contain continuous gravity-activated seal which shall compress against floor as door is closed. Raised sills and threshold drop seals will not be permitted.

e. Hardware

1. Hinges: two (2) IAC cam-lift butt-type hinges finished in US 26-D satin chrome shall be supplied with each door leaf. Manufacturer to furnish laboratory test data showing hinges of identical design have been cycled minimum of 125,000 times while supporting door leaf weighing 350 lb (159kg) minimum.

2. Pull Handles and push plates shall be supplied by the manufacturer.

3. Latches shall not be required to hold the door closed or to achieve acoustic seal. Door leaf and frame shall be reinforced per ANSI Standards A115.1 and A115.2 to receive security locks as called for on the hardware schedule. Locks to be supplied and installed by others.

3. ACOUSTIC PERFORMANCE

At least 10 days prior to bidding manufacturer shall submit independent laboratory test data indicating a Sound Transmission Class rating of at least STC 49 (ASTM E 90-85). Field performance when installed in accordance with IAC instructions should be minimum Noise Isolation Class rating of NIC 43.

4. GUARANTEE

Acoustic Door materials and hardware shall be guaranteed against defective workmanship for one year from shipment.

All designs and specifications subject to change without notice. Metric dimensions nominal.

FOR INFORMATION ON IAC'S COMPLETE LINE OF NOISE-LOCK ACOUSTIC DOORS REQUEST BULLETIN 3.0501.

© Copyright 1991, last printed July 1992 by



INDUSTRIAL ACOUSTICS COMPANY

SINCE 1949 — LEADERS IN NOISE CONTROL ENGINEERING, PRODUCTS AND SYSTEMS

UNITED STATES

1160 COMMERCE AVENUE
BRONX, NEW YORK 10462-5599
PHONE: (718) 931-8000
FAX: (718) 863-1138

UNITED KINGDOM

CENTRAL TRADING ESTATE
STAINES, MIDDLESEX, TW18 4XB
PHONE: (0784) 456251
FAX: (0784) 463303, TELEX: 25518

GERMANY

SOHLWEG 24
D-4055 NIEDERKRÜCHTEN
PHONE: (02163) 8431
FAX: (02163) 80618

TECHNICAL REPRESENTATION IN PRINCIPAL CITIES THROUGHOUT THE WORLD

PRINTED IN U.S.A.