



MASON INDUSTRIES, Inc.

Manufacturers of Vibration Control Products

350 Rabro Drive
Hauppauge, NY 11788
631/348-0282
FAX 631/348-0279
Info@Mason-Ind.com
www.Mason-Ind.com

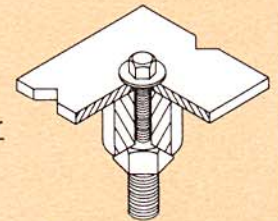
2101 W. Crescent Ave., Suite D
Anaheim, CA 92801
714/535-2727
FAX 714/535-5738
Info@MasonAnaheim.com
www.MasonAnaheim.com

SERIES 100 HEIGHT MATCHING METHODS SIZES 100 - 116

Series 100 Ductile Iron Extension Tops

DATA SHEET DS-209A

SLF Size	Adjustment Bolt	Cap Screw	Spring OD	Normal Assembly Height	TO INCREASE HEIGHT TO MATCH							
					108		109 - 110 - 111		112		113	
					Height	Solution	Height	Solution	Height	Solution	Height	Solution
101	7/8 x 53/4	1/2 x 11/4	33/4	7 1/4	8		9		10		10 1/2	
102	7/8 x 53/4	1/2 x 11/4	33/4	7 1/4	8	Raise	9		10	Dwg. A-14303	10 1/2	Dwg. A-14303
103	7/8 x 53/4	1/2 x 11/4	33/4	7 1/4	8	Bolt an	9	Dwg. A-14303	10	plus	10 1/2	plus
104	7/8 x 53/4	1/2 x 11/4	33/4	7 1/4	8	Add'l	9		10	1" spacer	10 1/2	1 1/2" spacer
105	7/8 x 53/4	1/2 x 11/4	33/4	7 1/4	8	3/4"	9		10		10 1/2	
106	7/8 x 53/4	1/2 x 11/4	33/4	7 1/4	8		9		10		10 1/2	
107	7/8 x 53/4	1/2 x 11/4	33/4	7 1/4	8		9		10		10 1/2	
					109 - 110 - 111		112		113		114 - 115	
108	7/8 x 53/4	1/2 x 11/4	4 1/2	8	9	1" spacer	10	1 1/2" spacer	10 1/2	Dwg. A-14304	12	A-14304 + 1 1/2" spacer
					112		113		114 - 115			
109	7/8 x 53/4	1/2 x 11/4	4 1/2	9	10	1" spacer	10 1/2	1 1/2" spacer	12	Dwg. A-14304		
					112		113		114 - 115			
110	7/8 x 53/4	1/2 x 11/4	5	9	10	1" spacer	10 1/2	Dwg. A-14305	12	A-14305 + 1 1/2" sp		
111	7/8 x 53/4	1/2 x 11/4	5	9	10	1" spacer	10 1/2	Dwg. A-14305	12	A-14305 + 1 1/2" sp		
					113		114 - 115		116			
112	1 x 6	1/2 x 11/4	5 1/2	10	10 1/2	Raise 1/2"	12	Dwg. A-14478	13	A-14478 + 1 1/2" sp		
					114 - 115		116					
113	1 x 6	1/2 x 11/4	6	10 1/2	12	1 1/2" spacer	13	1 1/2" spacer and 6 5/8" x 7 1/2" x 1" 65-70 Duro Pad				
					116							
114	1 x 6	1/2 x 11/4	6 3/4	12	13	1" spacer						
115	1 x 6	1/2 x 11/4	6 3/4	12	13	1" spacer						
116	1 1/4 x 8	5/8 x 11/2	7 3/4	13								

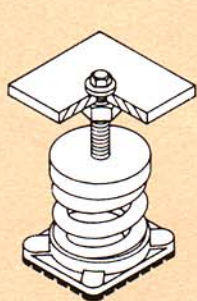


Spacers Required

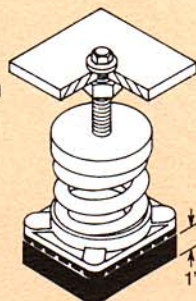
1" Spacer 1 1/2" Spacer

OD	1 1/2"	1 1/2"
ID	5/8"	5/8"
Height	1"	1 1/2"
	1/2 x 2 1/4	1/2 x 2 3/4

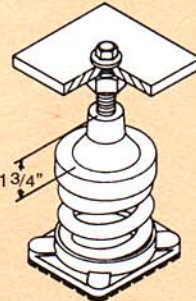
Supply Cap Screw in place of 1/2 x 11/4 Cap Screw



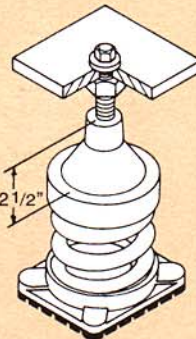
Raise Adjustment Bolt an Additional 3/4 inch



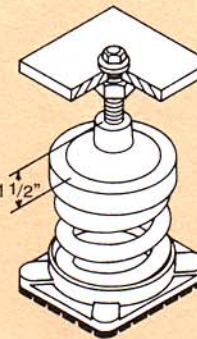
Cement 1" Pad 65 - 70 Duro 6 5/8" x 7 1/2"



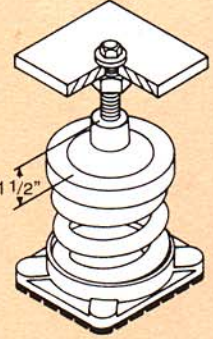
Drawing Number A-14303 For 3 3/4" OD Spring 1 3/4" Height Difference Drill & Tap - 7/8"-9UNC OD - 4 1/4" ID - 3 13/16" Weight - 1.8 lbs. Material - Gray Cast Iron



Drawing Number A-14304 For 4 1/2" OD Spring 2 1/2" Height Difference Drill & Tap - 7/8"-9UNC OD - 5" ID - 4 9/16" Weight - 2.5 lbs. Material - Gray Cast Iron



Drawing Number A-14305 For 5" OD Spring 1 1/2" Height Difference Drill & Tap - 7/8"-9UNC OD - 5 1/2" ID - 5 3/16" Weight - 2.85 lbs. Material - Gray Cast Iron



Drawing Number A-14478 For 5 1/2" OD Spring 1 1/2" Height Difference Drill & Tap - 1"-8UNC OD - 6 1/8" ID - 5 3/4" Weight - 3.4 lbs. Material - Gray Cast Iron

PROCEDURE —

Select the Heaviest Capacity (Tallest) SLF Mount size in the set. This sets the standard for the entire set. Modify the Lighter Capacity (Shorter) SLF Mount sizes as per the tables above to match the tallest selection.

EXAMPLE —

Set consists of 2 SLF-111, 1 SLF-108 and 1 SLF-107
Use —
2 SLF-111 — Standard
1 SLF-108 — Standard & 1" Spacer
1 SLF-107 — Refer to Drawing No. A-14303

EXAMPLE —

Set consists of 1 SLF-113, 1 SLF-111, 1 SLF-108 and 1 SLF-106
Use —
1 SLF-113 — Standard
1 SLF-111 — Refer to Drawing No. A-14305
1 SLF-108 — Refer to Drawing No. A-14304
1 SLF-106 — Refer to Drawing No. A-14303 & 1 1/2" Spacer



MASON INDUSTRIES, Inc.
 Manufacturers of Vibration Control Products
 350 Rabro Drive 708 N. Valley St. Suite K
 Hauppauge, NY 11788 Anaheim, CA 92801
 516/348-0282 714/535-2727
 FAX 516/348-0279 FAX 714/535-5738

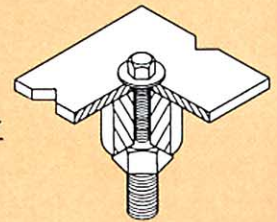
**SERIES 100 HEIGHT
 MATCHING METHODS
 SIZES 126 - 136**

**Series 100
 Ductile Iron
 Extension Tops**

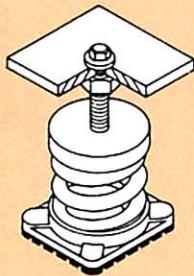
DATA SHEET DS-209B

SLF Size	Adjustment Bolt	Cap Screw	Spring OD	Normal Assembly Height	TO INCREASE HEIGHT TO MATCH									
					129 - 130		131		132		133 - 134 - 135		136	
					Height	Solution	Height	Solution	Height	Solution	Height	Solution	Height	Solution
126	7/8 x 53/4	1/2 x 11/4	33/4	8	8 1/2	Raise	9	1" spacer	9 1/2	1 1/2"	11	A-14303	11 3/4	A-14303
127	7/8 x 53/4	1/2 x 11/4	33/4	8	8 1/2	1/2"	9	spacer	9 1/2	spacer	11	+ 1" sp	11 3/4	+ 1 1/2" sp
128	7/8 x 53/4	1/2 x 11/4	4	8	8 1/2	Raise 1/2"	9	1" spacer	9 1/2	1 1/2" sp	11	A-24256	11 3/4	A-24256 + 1" spacer
129	7/8 x 53/4	1/2 x 11/4	4	8 1/2	131		132		133 - 134 - 135		136			
130	7/8 x 53/4	1/2 x 11/4	4 1/2	8 1/2	9	Raise	9 1/2	1" spacer	11	A-24256	11 3/4	A-24256 + 3/4" Raise	11 3/4	A-14304 + 3/4" Raise
					9	1/2"	9 1/2	spacer	11	A-14304				
131	7/8 x 53/4	1/2 x 11/4	4 1/2	9	132		133 - 134 - 135		136					
					9 1/2	Raise 1/2"	11	1 1/2" sp	11 3/4	A-14304				
132	7/8 x 53/4	1/2 x 11/4	5	9 1/2	133 - 134 - 135		136							
					11	A-14305	11 3/4	A-14305 + 3/4" Raise						
133	1 x 6	1/2 x 11/4	5 1/2	11	136									
134	1 x 6	1/2 x 11/4	5 1/2	11	11 3/4	Raise								
135	1 x 6	1/2 x 11/4	6	11	11 3/4	3/4"								
136	1 x 6	1/2 x 11/4	6 3/4	11 3/4										

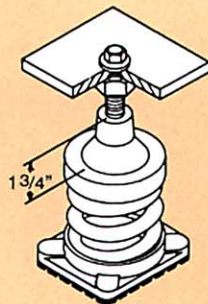
	<u>1" Spacer</u>	<u>1 1/2" Spacer</u>
OD	1 1/2"	1 1/2"
ID	5/8"	5/8"
Height	1"	1 1/2"
Supply Cap Screw in place of 1/2 x 1 1/4 Cap Screw	1/2 x 2 1/4	1/2 x 2 3/4



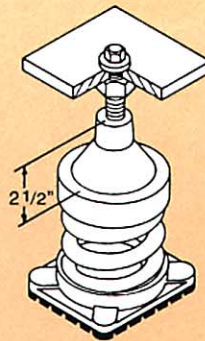
Spacers Required



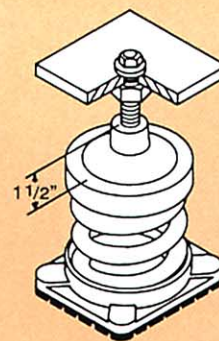
Raise Adjustment Bolt an Additional 3/4 inch



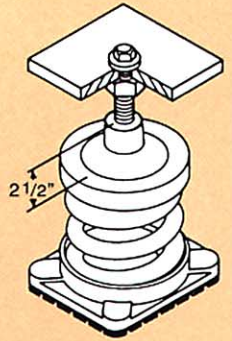
Drawing Number A-14303
 For 3 3/4" OD Spring
 1 3/4" Height Difference
 Drill & Tap — 7/8"-9UNC
 OD — 4 1/4"
 ID — 3 13/16"
 Weight — 1.8 lbs.
 Material — Gray Cast Iron



Drawing Number A-14304
 For 4 1/2" OD Spring
 2 1/2" Height Difference
 Drill & Tap — 7/8"-9UNC
 OD — 5"
 ID — 4 9/16"
 Weight — 2.5 lbs.
 Material — Gray Cast Iron



Drawing Number A-14305
 For 5" OD Spring
 1 1/2" Height Difference
 Drill & Tap — 7/8"-9UNC
 OD — 5 1/2"
 ID — 5 3/16"
 Weight — 2.85 lbs.
 Material — Gray Cast Iron



Drawing Number A-24256
 For 4" OD Spring
 2 1/2" Height Difference
 Drill & Tap — 7/8"-9UNC
 OD — 4 1/2"
 ID — 4 1/16"
 Weight — 2.35 lbs.
 Material — Gray Cast Iron

PROCEDURE —

Select the Heaviest Capacity (Tallest) SLF Mount size in the set. This sets the standard for the entire set. Modify the Lighter Capacity (Shorter) SLF Mount sizes as per the tables above to match the tallest selection.

EXAMPLE —

Set consists of 2 SLF-133, 1 SLF-130 and 1 SLF-127
 Use —
 2 SLF-133 — Standard
 1 SLF-130 — Refer to Drawing No. A-14304
 1 SLF-127 — Refer to Drawing No. A-14303 & 1" Spacer

EXAMPLE —

Set consists of 1 SLF-134, 1 SLF-132, 1 SLF-129 and 1 SLF-126
 Use —
 1 SLF-134 — Standard
 1 SLF-132 — Refer to Drawing No. A-14305
 1 SLF-129 — Refer to Drawing No. A-24256
 1 SLF-126 — Refer to Drawing No. A-14303 & 1" Spacer